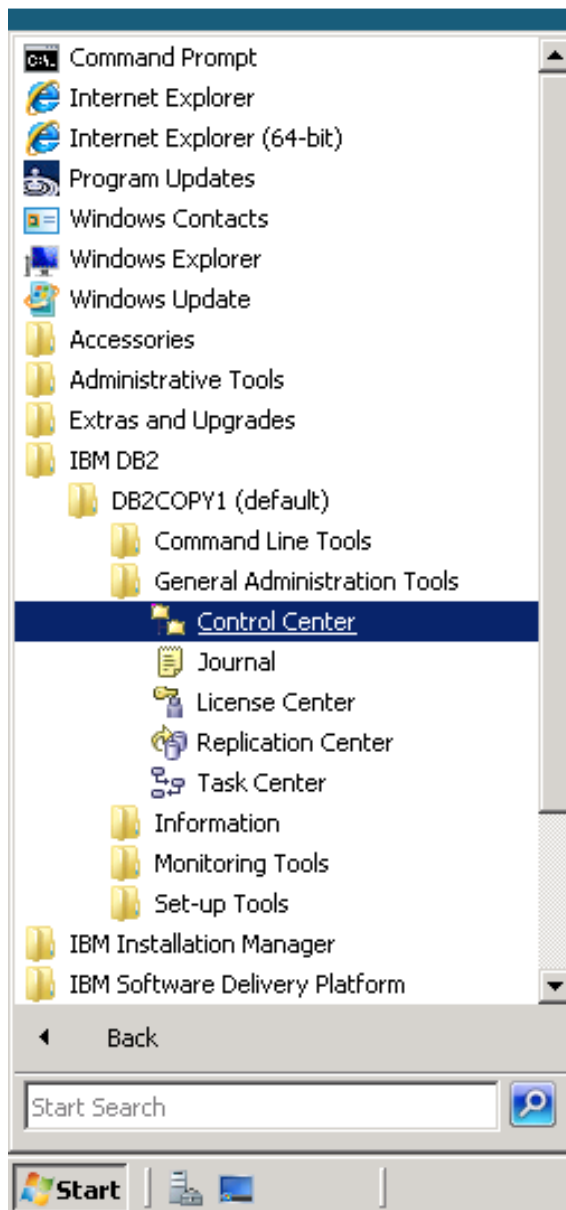


IBM DB2 Control Center

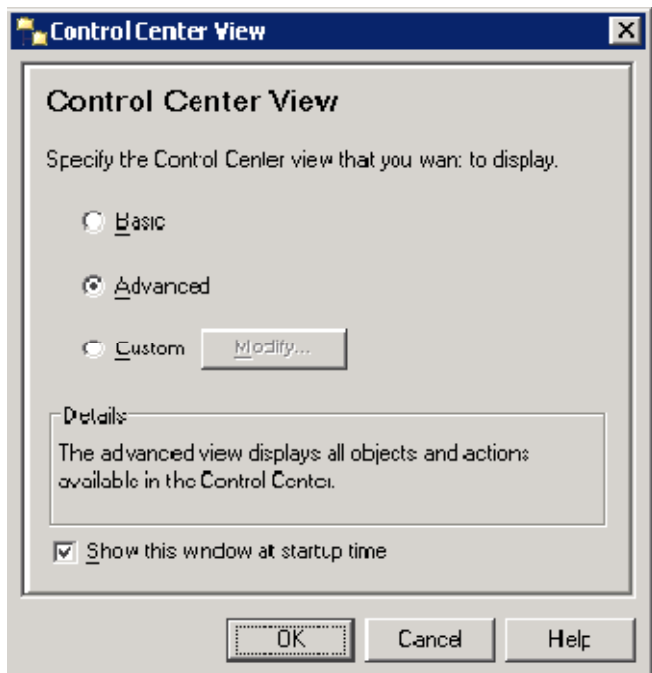
Follow the instructions here to logon to the Terminal Server:

http://enterprise.waltoncollege.uark.edu/Remote_Desktop_IBM.pdf

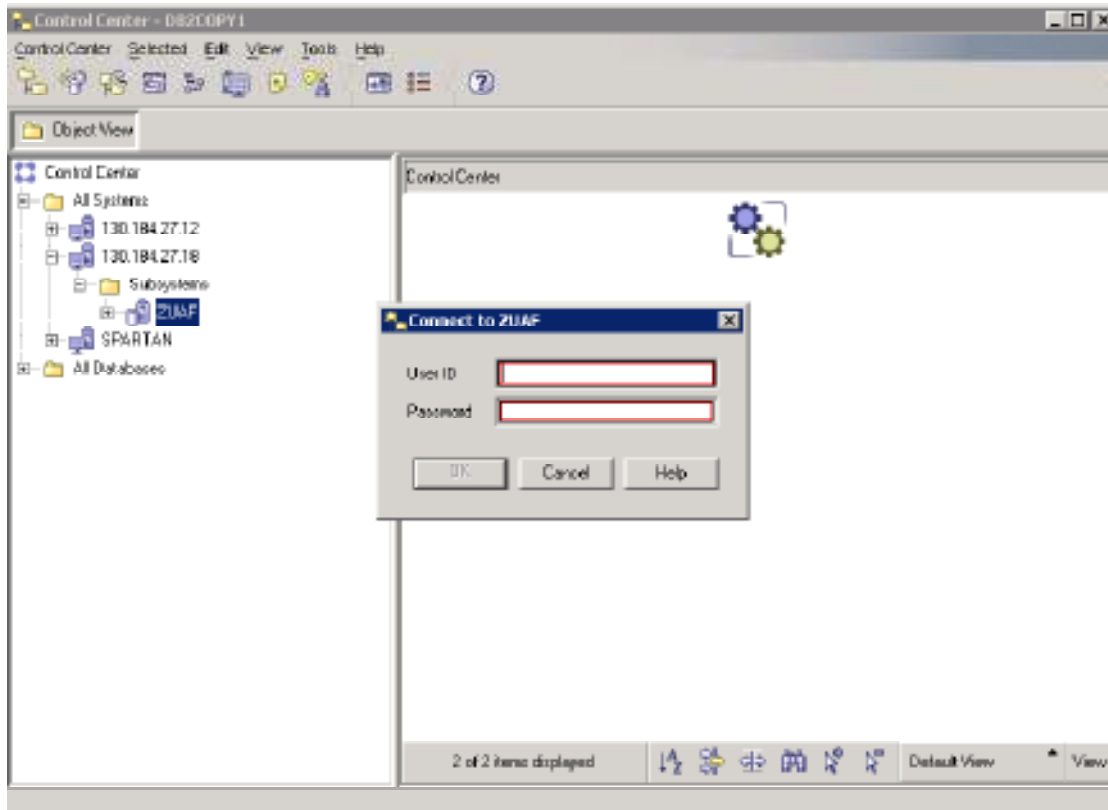
Click Start→IBM DB2→DB2COPY1 (default)→General Administration Tools→Control Center or double-click on Control Center icon on the desktop.



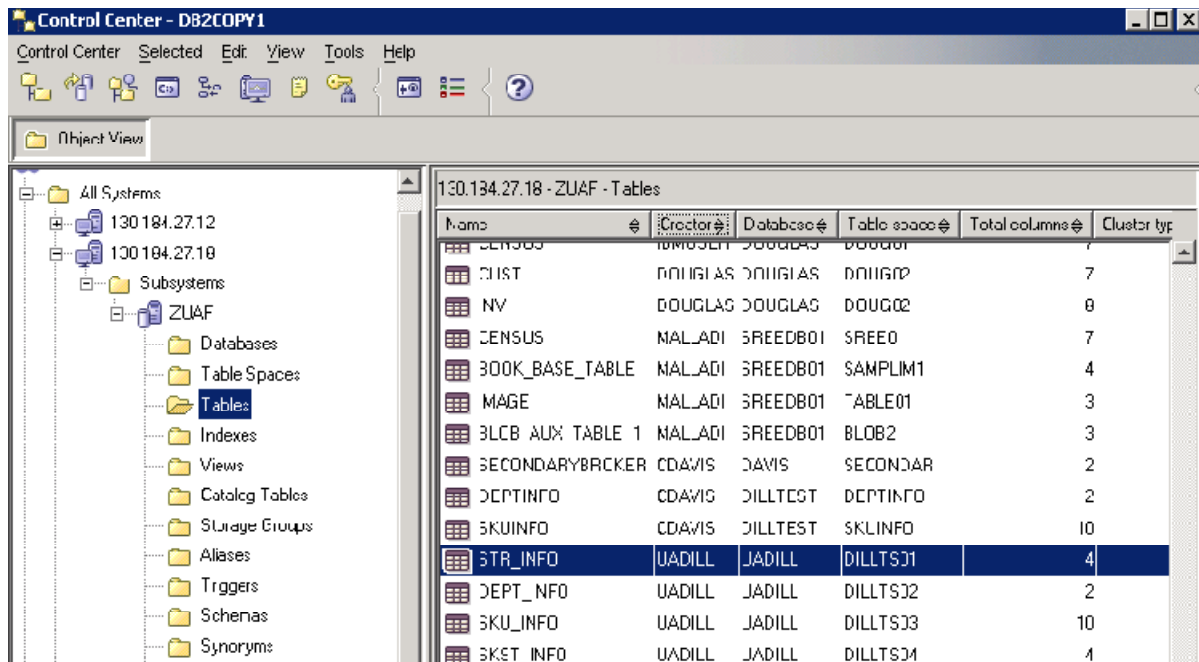
Click "OK" on Control Center View (make sure the Advanced radio button is selected)



To logon you will need to select the appropriate Server®Subsystem/Instance®Database. Click ZUAF on 130.184.27.18 as shown below.



It will prompt you to logon using your assigned **Username** and **Password**. (If this does not happen you can right-click the Database and select “Connect”). Your Initial screen should look like this:



To view a table, double click on the desired table to open. For example, double click STR_INFO (selected above) and you will see your table displayed as below.


130.184.27.18 - ZUAF - UADILL - UADILL - STR_INFO

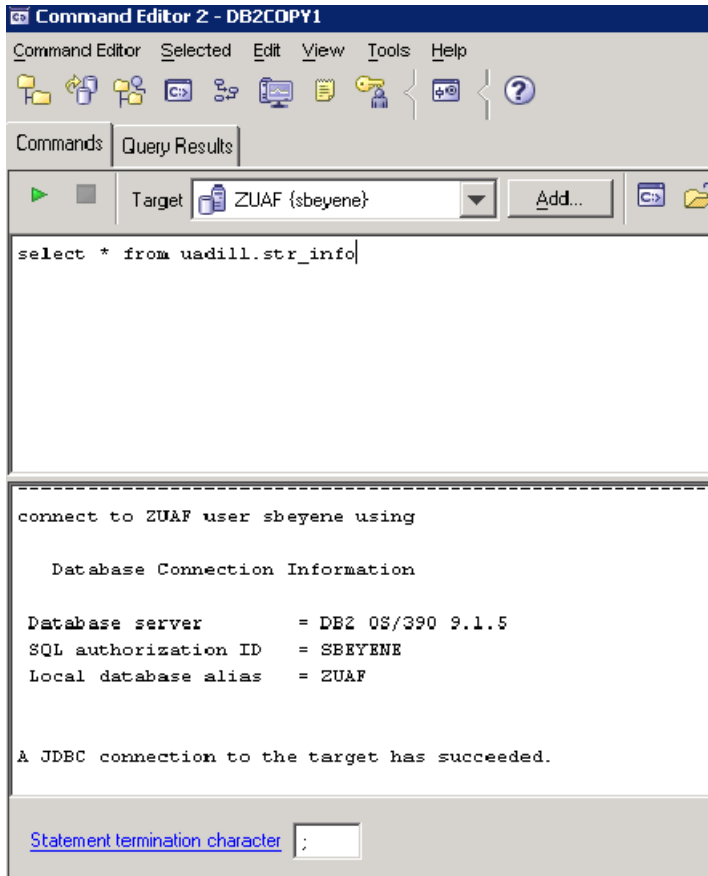
Edits to these results are performed as searched UPDATEs and DELETEs. Use the Tools Settings notebook to change the form of editing.

STORE	CITY	STATE	ZIP
7007	THE WOODLA...	TX	77380
6400	MABELVALE ...	AR	72103
7807	PASADENA ...	TX	77506
5504	PINEVILLE ...	NC	28134
8607	BEAUMONT ...	TX	77706
6604	GREENVILLE ...	SC	29607
4802	PANAMA CITY...	FL	32405
2303	INDEPENDEN...	MO	64057
9900	LIT TLE ROCK ...	AR	72201
2503	KANSAS CITY ...	MO	64155
7503	NILES	OH	44446
1609	FLAGSTAFF ...	AZ	86004
9603	LOUISVILLE ...	KY	40219
2909	LOGAN	UT	84341
4003	WEST DES M...	IA	50266
7107	HOUSTON ...	TX	77070
8808	LIT TLE ROCK ...	AR	72201
5300	NASHVILLE ...	TN	99999
303	ST. ANN	MO	63074
7500	LOUISVILLE ...	KY	40299
507	FORT WORT ...	TX	76116
7603	TOLEDO ...	OH	43623
8302	KENNER ...	LA	70065
4604	HICKORY ...	NC	28602
5912	MIAMI	FL	33189

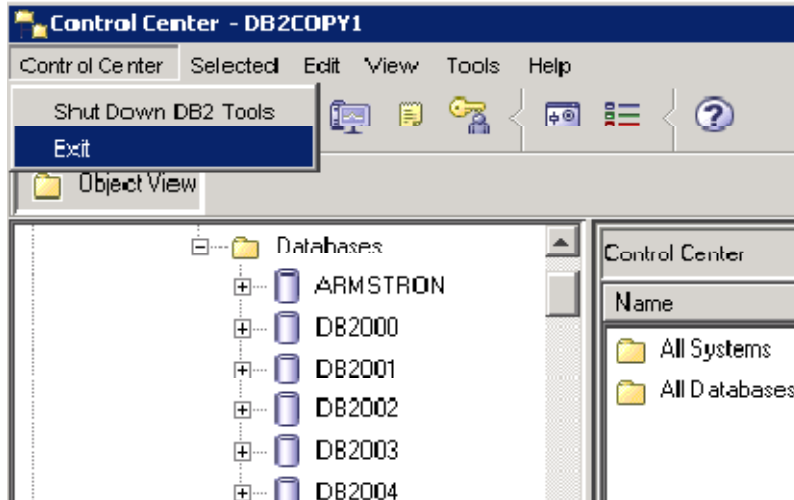
Buttons: Add Row, Delete Row, Commit, Roll Back, Filter, Fetch More Rows, Close, Help

Automatically commit updates 100 row(s) in memory

You can also select Command Editor  button on the toolbar... Select Add... Specify Target as “DB2 UDB for z/OS Subsystem” (ZUAF) and do queries. Enter your UserID and password as above when prompted.



Type in your query and run it by clicking the green button to see the contents of that table. Once you're done, please log out properly. To do so go to Control Center → Exit



Please email the Enterprise Systems Team at EntSys@uark.edu if you have any questions.