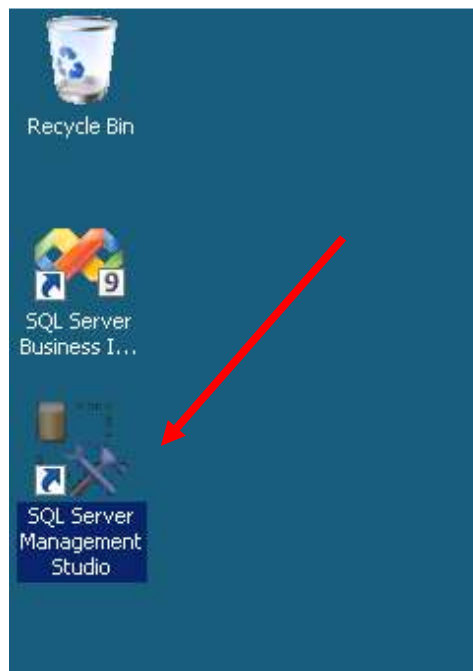


MEC Guide

Once you receive your University of Arkansas MEC account, access to the Enterprise Systems portal will be via remote desktop connection. Remote access documentation can be found at the following link:

http://enterprise.waltoncollege.uark.edu/Remote_Desktop_MEC.pdf

The desktop is your starting point to access the Microsoft SQL Server system. Double-click on SQL Server Management Studio icon...



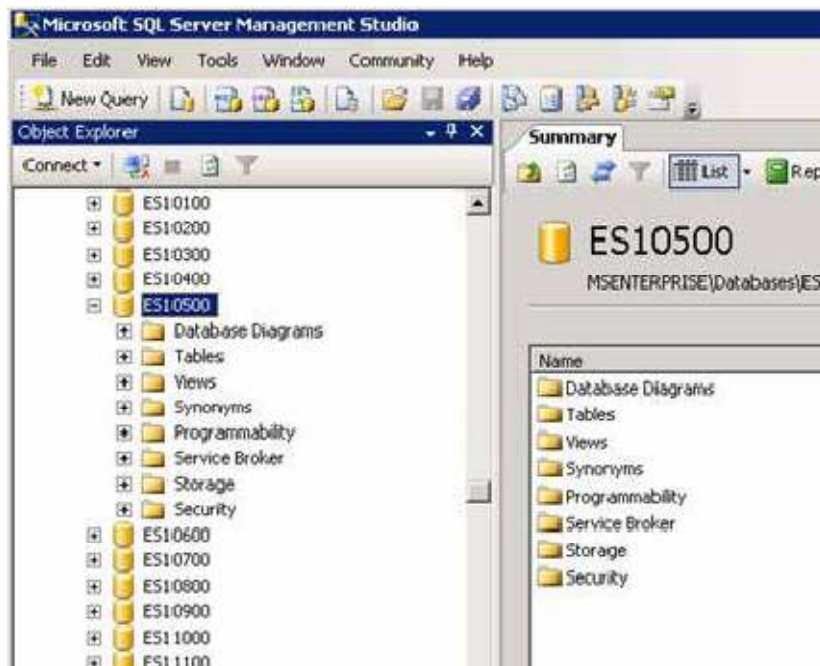
Connect to Server Information

- Server type: Database Engine
- Server name: MSEnterprise
- Authentication: Windows Authentication



Click Connect and this will give you access to the Microsoft SQL Server system.

You will have a database like your username. This database is where you will create your own tables. For example, user ES10500 has full admin access to ES10500.



You also will have access to the following databases: Hallux, Dillard's, and different versions of Sam's Club. To get details of these databases, go to the <http://enterprise.waltoncollege.uark.edu/> and click on **Datasets**.

Also, after receiving this e-mail you will be given access to the Solution Files for the Sample Queries and the Student Roster creation process.

Please note the following link:

<http://enterprise.waltoncollege.uark.edu/solutions/default.aspx?pic=MEC>

– (Solution Files & Roster Creation Process)

This process requires you to input your email address as you submitted to us and the following password to gain access to these screens.

E-mail: (e-mail address submitted on earlier registration)

Password: G4TWC@UA (All Uppercase)

If you have problems with this process, please contact the University of Arkansas.