

# SAP Logon Guide

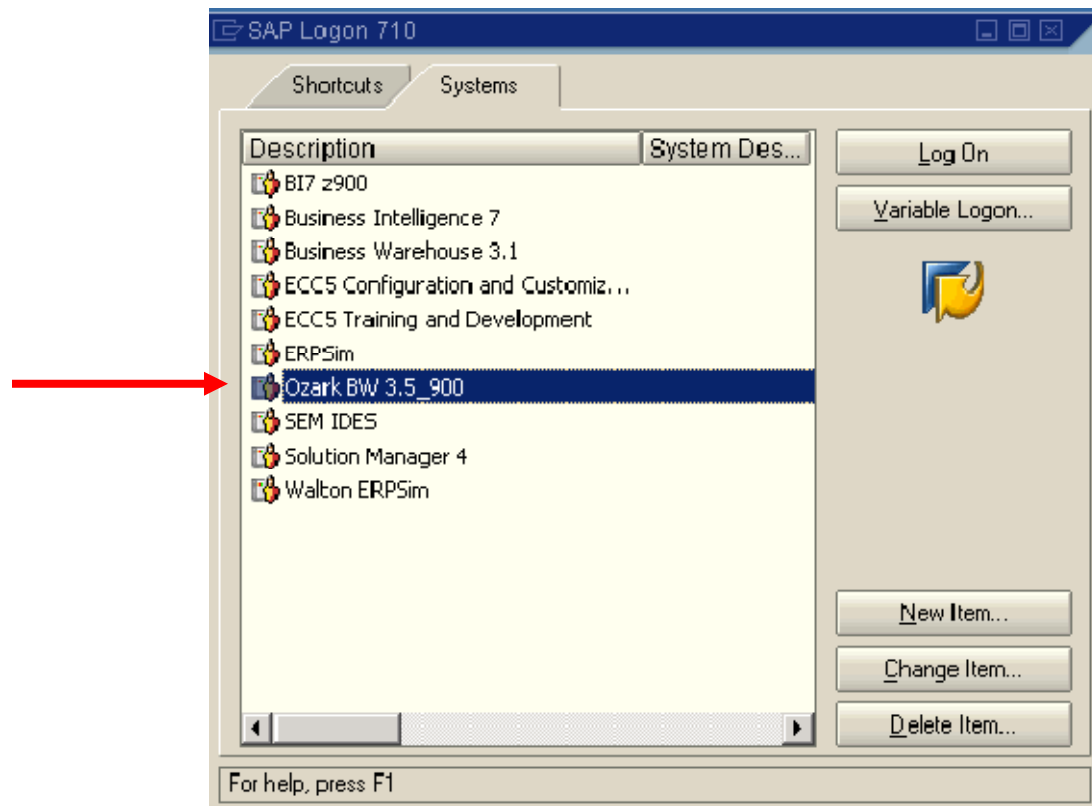
Access to the SAP system will be via remote desktop connection. Remote access documentation can be found at the following link:

[http://enterprise.waltoncollege.uark.edu/Remote\\_Desktop\\_SAP.pdf](http://enterprise.waltoncollege.uark.edu/Remote_Desktop_SAP.pdf)

The desktop is your starting point to access the SAP system. Double-click on SAP Logon. See arrow in image below.



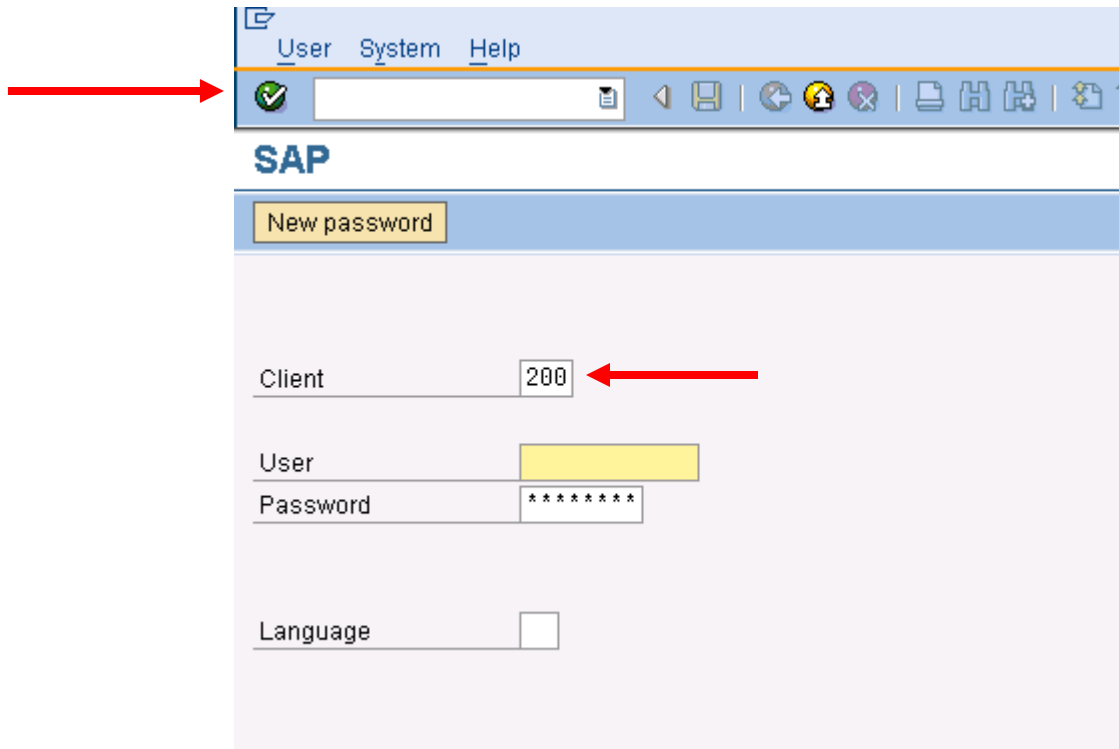
You should see a screen as shown below. Select Ozark BW 3.5\_900 and click "Log On" **SAP Logon Guide**



Enter the Username and Password provided to you.

**Note: Ensure that you are using client 200**

Click the green check mark button to login. See arrow in image below.



If you have problems with this process, please contact Saba Beyene at sbeyene@uark.edu.

Also, if you would like to use the system for your class and would like to request student accounts, please note the following link:

<http://enterprise.waltoncollege.uark.edu/Solutions/login.aspx?ReturnUrl=%2fsolutions%2fdefault.aspx%3fpic%3dSAP&pic=SAP>

This process requires you to input your email address as you submitted to us when you requested your faculty account and the following password to gain access to these screens.

E-mail: (e-mail address submitted on earlier registration)

Password: G4TWC@UA (All Uppercase)